

KURIN TRASH BIN

Designed by *Giordano Caldarini*

boreka
by KIAN



Product Description

- Frame : Solid ash wood
- Countertop : Solid surface
- Detailing : Stainless steel in hairline finish
- Carcass : Ash veneer
- Glides : Plastic PC
- P/S : Including 2pcs PE bin (3.7kg capacity for each bin)

Material Finishes

Wood Stain (Indoor)



ASH-Natural

ASH-Cigar

ASH-Classic

ASH-Matt Black

ASH-Mocha

Stainless Steel Hairline



Hairline Stainless Steel

Hairline Bronze M24

Hairline Gold M23

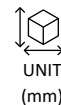
Solid Surface

Check with Sales Consultant

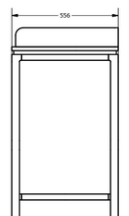
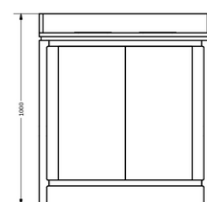
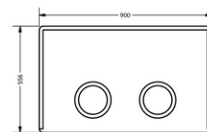
Patent Registration:



0.61 m3
1 PC/CTN



Height : 1010
Wide : 900
Depth : 556



UNIT (mm)