

# LINEA 6073 DINING TABLE BASE

Designed by Enrique Marti

boreka  
by KIAN



## Product Description

Frame : Mild steel in powder coat finish  
Detailing : Mild steel in powder coat finish  
Glides : Stick on felt

## Material Finishes

### Wood Stain (Indoor)



ASH-Natural

ASH-Cigar

ASH-Classic

ASH-Matt Black

ASH-Mocha

### Powder Coating (Indoor)



Brass  
M26

Sand  
M30

Textured White Wash  
M34

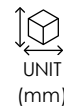
Textured Brown  
M8

Textured Brown Red  
M35

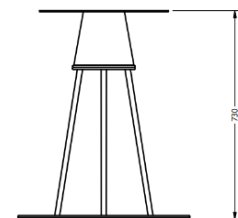
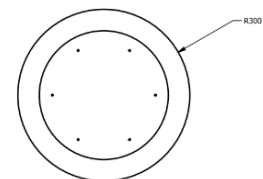
Patent Registration:



0.3 m3  
1PC/CTN



Height : 730  
Diameter : 600



UNIT (mm)